

XECRO

www.xecro.com



Most Reliable Sensor Technology

- *electric field*
- *inductive*
- *capacitive*
- *optical*

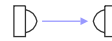
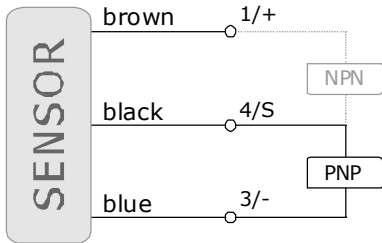




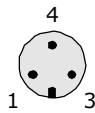
02 mm

05 mm

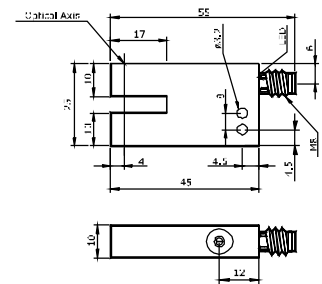
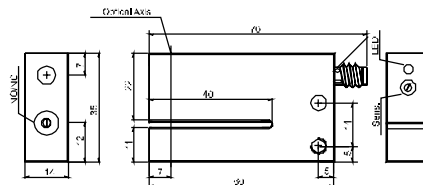
Output Schematics



Connector M8



The use of this sensors is not permitted if the safety of people is relying upon it.



SPECIFICATIONS

	FLE 02...	FLE 05...
Operating Voltage	10...35 VDC	10...35 VDC
Current Consumption	< 30 mA	< 30 mA
Output Current	200 mA, self-resetting	200 mA, self-resetting
Voltage Drop	2.5 V @ 200 mA	2.5 V @ 200 mA
Switching Frequency	2.5 KHz	2.5 KHz
Resolution	Ø 0.5 mm	Ø 0.5 mm
Adjustment	270° Potentiometer	270° Potentiometer
Switching Hysteresis	< 0.2 mm	< 0.2 mm
Repeatability	0.01 mm	0.01 mm
Operating Temperature	-10...+60 °C	-10...+60 °C
Ambient Light Immunity	70.000 lux	70.000 lux
Isolation Voltage	500 V	500 V
Housing Material	Aluminum	Aluminum
Protection Class	IP 67	IP 67
Optical Elements	Infrared / Glass Window	Infrared / Glass Window

Article Code

PNP, NO		FLI05 PO/M8
PNP, NC		FLI05 PC/M8
PNP, NO/NC	FLI02 PS/M8	
NPN, NO		FLI05 NO/M8
NPN, NC		FLI05 NC/M8
NPN, NO/NC	FLI02 NS/M8	

Recommended Connecting Cable

M8/3...

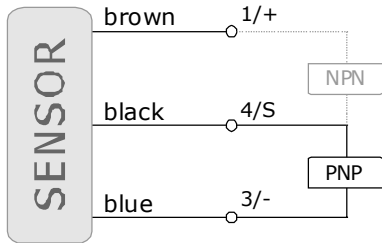
M8/3...



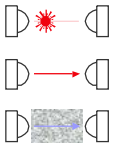
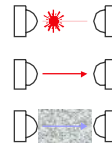
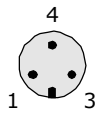
30 mm

40 mm

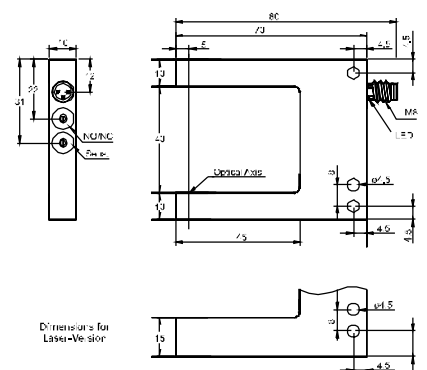
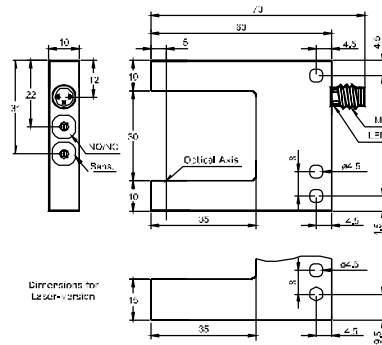
Output Schematics



Connector M8



The use of this sensors is not permitted if the safety of people is relying upon it.



SPECIFICATIONS

	FLx 30...	FLx 40...
Operating Voltage	10...35 VDC	10...35 VDC
Current Consumption	< 30 mA	< 30 mA
Output Current	200 mA, self-resetting	200 mA, self-resetting
Voltage Drop	2.5 V @ 200 mA	2.5 V @ 200 mA
Switching Frequency	red-light: 2.5 kHz laser: 10 kHz	red-light: 2.5 kHz laser: 10 kHz
Resolution	red-light: Ø0.3mm laser: Ø0.03 mm	red-light: Ø0.3mm laser: Ø0.03 mm
Adjustment	270° Potentiometer	270° Potentiometer
Switching Hysteresis	< 0.2 mm	< 0.2 mm
Repeatability	0.01 mm	0.01 mm
Operating Temperature	-10...+60 °C	-10...+60 °C
Ambient Light Immunity	50.000 lux	50.000 lux
Isolation Voltage	500 V	500 V
Housing Material	Aluminum	Aluminum
Protection Class	IP 67	IP 67
Optical Elements	Red-Light / Laser Glass Window	Red-Light / Laser Glass Window

Article Code

PNP, NO / NC - Red-Light	FLE30 PS/M8	FLE40 PS/M8
NPN, NC / NC - Red-Light	FLN30 NS/M8	FLN40 NS/M8
PNP, NO / NC - Laser	FLA30 PS/M8	FLA40 PS/M8
NPN, NO / NC - Laser	FLN30 NS/M8	FLN40 NS/M8
PNP, NO / NC - Dirt Immune	FLD30 PS/M8	FLD40 PS/M8
NPN, NO / NC - Dirt Immune	FLN30 NS/M8	FLN40 NS/M8

Recommended Connecting Cable

M8/3...

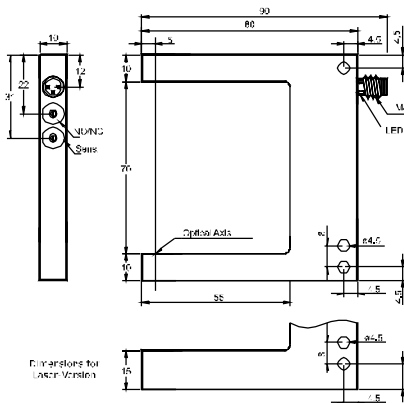
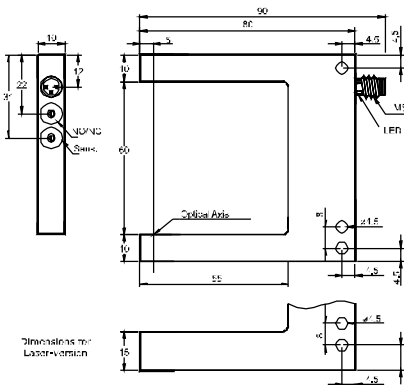
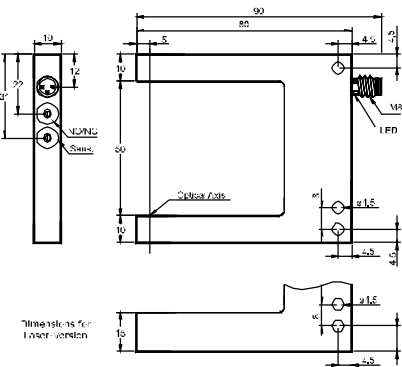
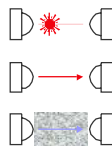
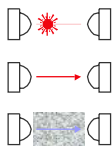
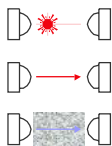
M8/3...

Fork-Light-Barriers

50 mm

60 mm

70 mm



FLx 50...	FLx 60...	FLx 70...
10...35 VDC	10...35 VDC	10...35 VDC
< 30 mA	< 30 mA	< 30 mA
200 mA, self-resetting	200 mA, self-resetting	200 mA, self-resetting
2.5 V @ 200 mA	2.5 V @ 200 mA	2.5 V @ 200 mA
red-light: 2.5 kHz laser: 10 kHz	red-light: 2.5 kHz laser: 10 kHz	red-light: 2.5 kHz laser: 10 kHz
red-light: Ø0.3mm laser: Ø0.03 mm	Ø 0.03 mm	red-light: Ø0.3mm laser: Ø0.03 mm
270° Potentiometer	270° Potentiometer	270° Potentiometer
< 0.2 mm	< 0.2 mm	< 0.2 mm
0.01 mm	0.01 mm	0.01 mm
-10...+60 °C	-10...+60 °C	-10...+60 °C
50.000 lux	50.000 lux	50.000 lux
500 V	500 V	500 V
Aluminum	Aluminum	Aluminum
IP 67	IP 67	IP 67
Red-Light / Laser Glass Window	Red-Light / Laser Glass Window	Red-Light / Laser Glass Window

FLE50 PS/M8	FLE60 PS/M8	FLE70 PS/M8
FLE50 NS/M8	FLE60 NS/M8	FLE70 NS/M8
FLA50 PS/M8	FLA60 PS/M8	FLA70 PS/M8
FLA50 NS/M8	FLA60 NS/M8	FLA70 NS/M8
FLD50 PS/M8	FLD60 PS/M8	FLD70 PS/M8
FLD50 NS/M8	FLD60 NS/M8	FLD70 NS/M8

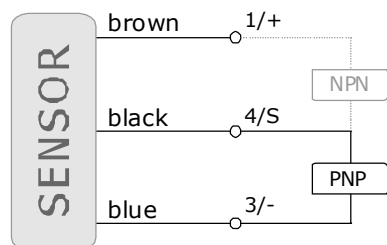
M8/3...	M8/3...	M8/3...
---------	---------	---------



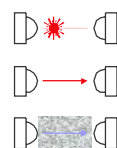
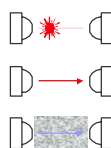
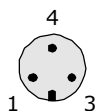
80 mm

90 mm

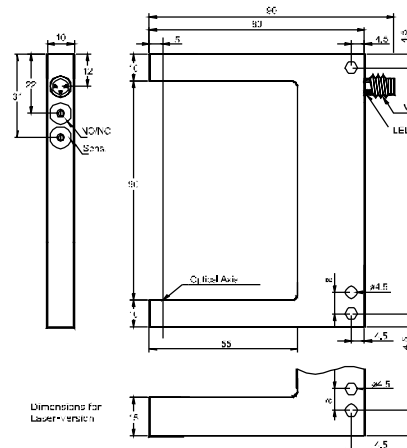
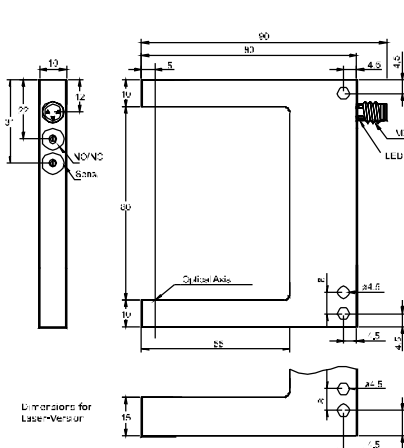
Output Schematics



Connector M8



The use of this sensors is not permitted if the safety of people is relying upon it.



SPECIFICATIONS

- Operating Voltage
- Current Consumption
- Output Current
- Voltage Drop
- Switching Frequency
- Resolution
- Adjustment
- Switching Hysteresis
- Repeatability
- Operating Temperature
- Ambient Light Immunity
- Isolation Voltage
- Housing Material
- Protection Class
- Optical Elements

FLx 80...
 10...35 VDC
 < 30 mA
 200 mA, self-resetting
 2.5 V @ 200 mA
 red-light: 2.5 kHz | laser: 10 kHz
 red-light: Ø0.3mm | laser: Ø0.03 mm
 270° Potentiometer
 < 0.2 mm
 0.01 mm
 -10...+60 °C
 50.000 lux
 500 V
 Aluminum
 IP 67
 Red-Light / Laser Glass Window

FLx 90...
 10...35 VDC
 < 30 mA
 200 mA, self-resetting
 2.5 V @ 200 mA
 red-light: 2.5 kHz | laser: 10 kHz
 red-light: Ø0.3mm | laser: Ø0.3 mm
 270° Potentiometer
 < 0.2 mm
 0.01 mm
 -10...+60 °C
 70.000 lux
 500 V
 Aluminum
 IP 67
 Red-Light / Laser Glass Window

Article Code

- PNP, NO / NC - Red-Light
- NPN, NC / NC - Red-Light
- PNP, NO / NC - Laser
- NPN, NO / NC - Laser
- PNP, NO / NC - Dirt Immune
- NPN, NO / NC - Dirt Immune

- FLE80 PS/M8
- FLE80 NS/M8
- FLA80 PS/M8
- FLA80 NS/M8
- FLD80 PS/M8
- FLD80 NS/M8

- FLE90 PS/M8
- FLE90 NS/M8
- FLA90 PS/M8
- FLA90 NS/M8
- FLD90 PS/M8
- FLD90 NS/M8

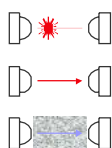
Recommended Connecting Cable

M8/3...

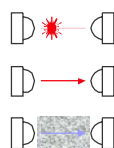
M8/3...

Fork-Light-Barriers

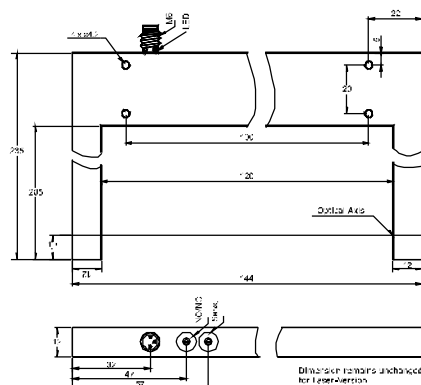
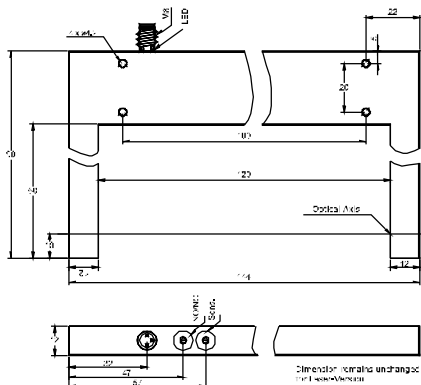
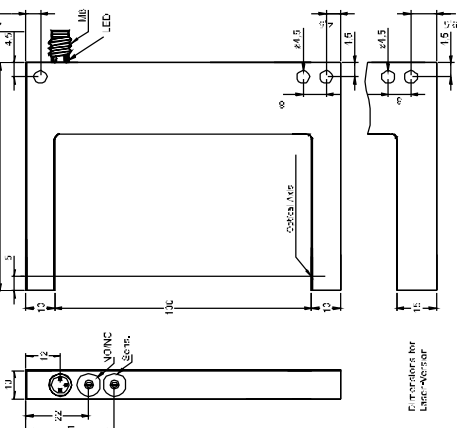
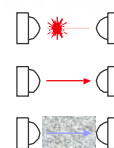
100 mm



120 mm



120/205 mm



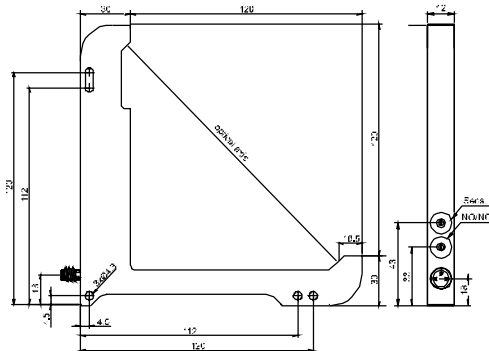
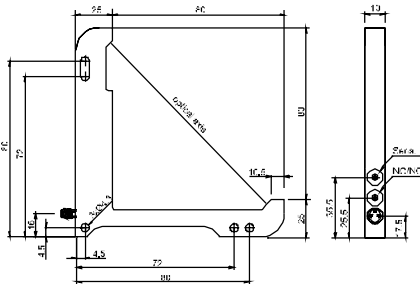
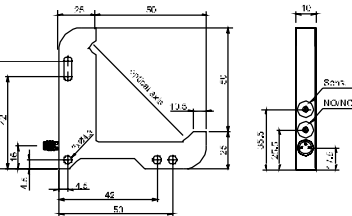
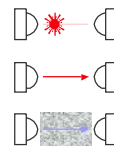
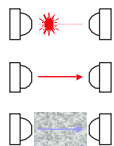
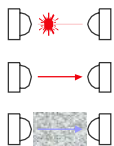
FLx 100...	FLx 120...	FLx 120/205...
10...35 VDC	10...35 VDC	10...35 VDC
< 30 mA	< 30 mA	< 30 mA
200 mA, self-resetting	200 mA, self-resetting	200 mA, self-resetting
2.5 V @ 200 mA	2.5 V @ 200 mA	2.5 V @ 200 mA
red-light: 2.5 kHz laser: 10 kHz	red-light: 2.5 kHz laser: 10 kHz	red-light: 2.5 kHz laser: 10 kHz
red-light: Ø0.3mm laser: Ø0.3 mm	Ø 0.03 mm	red-light: Ø 0.3mm laser: Ø0.03 mm
270° Potentiometer	270° Potentiometer	270° Potentiometer
< 0.2 mm	< 0.2 mm	< 0.2 mm
0.01 mm	0.01 mm	0.01 mm
-10...+60 °C	-10...+60 °C	-10...+60 °C
70.000 lux	50.000 lux	50.000 lux
500 V	500 V	500 V
Aluminum	Aluminum	Aluminum
IP 67	IP 67	IP 67
Red-Light / Laser Glass Window	Red-Light / Laser Glass Window	Red-Light / Laser Glass Window

FLE100 PS/M8	FLE120 PS/M8	FLE120/205 PS/M8
FLE100 NS/M8	FLE120 NS/M8	FLE120/205 NS/M8
FLA100 PS/M8	FLA120 PS/M8	FLA120/205 PS/M8
FLA100 NS/M8	FLA120 NS/M8	FLA120/205 NS/M8
FLD100 PS/M8	FLD120 PS/M8	FLD120/205 PS/M8
FLD100 NS/M8	FLD120 NS/M8	FLD120/205 NS/M8
M8/3...	M8/3...	M8/3...

Fork-Light-Barriers

OPTICAL

50 mm 80 mm 120 mm



LLx50...	LLx 80...	LLx 120...
10...35 VDC < 30 mA 200 mA, self-resetting 2.5 V @ 200 mA red-light, IR: 2.5 kHz laser: 10 kHz	10...35 VDC < 30 mA 200 mA, self-resetting 2.5 V @ 200 mA red-light, IR: 2.5 kHz laser: 10 kHz	10...35 VDC < 30 mA 200 mA, self-resetting 2.5 V @ 200 mA red-light, IR: 2.5 kHz laser: 10 kHz
270° Potentiometer < 0.2 mm 0.01 mm -10...+60 °C 50.000 lux 500 V Aluminum IP 67 Infrared / Red-Light / Laser Glass Window	270° Potentiometer < 0.2 mm 0.01 mm -10...+60 °C 50.000 lux 500 V Aluminum IP 67 Infrared / Red-Light / Laser Glass Window	270° Potentiometer < 0.2 mm 0.01 mm -10...+60 °C 50.000 lux 500 V Aluminum IP 67 Infrared / Red-Light / Laser Glass Window

LLE50 PS/M8 LLE50 NS/M8 LLA50 PS/M8 LLA50 NS/M8 LLD50 PS/M8 LLD50 NS/M8	LLE80 PS/M8 LLE80 NS/M8 LLA80 PS/M8 LLA80 NS/M8 LLD80 PS/M8 LLD80 NS/M8	LLE120 PS/M8 LLE120 NS/M8 LLA120 PS/M8 LLA120 NS/M8 LLD120 PS/M8 LLD120 NS/M8
----------------------------------------------------------------------------------------	----------------------------------------------------------------------------------------	----------------------------------------------------------------------------------------------

M8/3... M8/3... M8/3...

XECRO

Xecro Ltd. International

Doehrbruch 24

30559 Hannover, Germany

Fon +49 511 696041040

Fax +49 511 6960410409

info@xecro.com

<http://www.xecro.com>



This catalog has been printed with environmentally friendly material; even if so - think twice before you throw this away.